



QB3 Garage User's Guide

Table of Contents

Introduction	3
The QB3 Administrative Team (aka the <i>QB3 Garage Band</i>)	3
Security Access	5
Proxy Card	5
Keys	6
Lab Space	6
EH&S	6
“Recharging” of Expenses	8
Move-in Preparations	8
Modification to Space	8
Phone Service	8
Internet Access	9
Mail Service	9
Building Utilities & Malfunctions	9
Intellectual Property	10
Pre-move-in and Move-out checklists	11
Contacts	12
Monthly Rents and Reimbursement	12
Emergency	12
Working with UC Investigators	13
Additional Resources and Services Available	13
Core Facilities	13

Introduction

Thank you for sitting your company in the QB3 incubator, now known as the *QB3 Garage – Incubating the Next Generation of Great Companies!* QB3 was created by the State of California to help accelerate the transfer of biomedical innovations to the marketplace, and the QB3 incubator is one of the most exciting examples of our commitment to this goal. Not only are we proud to be able to offer you nearly unique resources (small units of state-of-the-art laboratory space in the heart of QB3 on the UCSF Mission Bay and UC Berkeley campuses) to help your company get going, but we are thrilled to have you set a positive role model for QB3 members who are considering the various opportunities for moving their inventions to commercialization.

In order to help you succeed, we are committed to helping you start producing data as quickly as possible and to ensuring that the space meets your needs. Therefore we created this Users Guide to assist you in negotiating the various steps that will be required to move in. It is critical to the success of the *QB3 Garage* that the QB3 administration and the tenants comply with both State and University policy. As you can imagine – innovative programs like the *QB3 Garage* can pose unusual challenges for the University administration, and there will be times when we will all have to work together to resolve issues as they arise. However, with patience and adherence to the University of California policies – we are confident of the success of this initiative as well as yours.

The QB3 Administrative Team (aka the *QB3 Garage Band*)



Regis Kelly
QB3 Director
Regis.Kelly@qb3.org
Leadership and lease approval



Douglas Crawford
QB3 Associate Director
Douglas.Crawford@qb3.org
415-514-4408
Garage management, lease changes,
entrepreneurial and scientific resources,
etc.

Facilities:



Paolo Daniele
QB3-UCSF Program Manager
Paolo.Daniele@ucsf.edu
415-514-9770
Rent Checks, proximity cards, keys,
website, phone service, and signage



Lois Clift O'Grady
QB3-UCSF Director of Space & Planning
cliftogrady@ucsf.edu
415-514-4664
Facility modifications, installations, and
project coordination

Lease, financial, website, etc.



Joeleen Caccam
QB3 Administrative Assistant
Joeleen.Caccam@ucsf.edu
415-514-0265



Millo Mau Pasquini
QB3 Assistant Director
Millo.Pasquini@qb3.org
415-476-3175
Lease and financial oversight

Security Access

Proxy Card

Incubator tenants and their employees are required to get a Non-Associate UCSF ID badge. The ID must be presented to the security staff upon entry to the QB3 building and carried at all times while in the building. The ID card will provide 24 hour access to the building from either of the perimeter doors as well as the entrance to the incubator via the door to 218. It will take several days to activate your ID card and **all cards must be authorized by Paolo Daniele, QB3-UCSF Program Manager**. The cost for a UCSF proximity ID card is **\$35.00**. The individual paying for the card must pay the UCSF Police Department WE ID program at the time the card is issued by cash, check, or money order (payable to "UCSF Regents"). Credit Cards are accepted at the Parnassus location only as long as you are using Visa or MasterCard. The individual will be photographed and an ID card will be issued upon verification of identity.

WE ID Service Locations (Phone # for all locations: 415-476-2088)

Mission Bay Campus

UCSF Police Department Modular
Across from QB3 (1700 4th Street, San Francisco, CA 94158), in the parking lot
By Appointment Only:
Monday, Tuesday, Wednesday, &
Friday 8:15 AM to 4:00 PM



Parnassus Campus

UCSF Police Department Parnassus
500 Parnassus Avenue
Millberry Union, Room G-18
San Francisco, CA 94143-0238
Drop-in hours:
Monday - Friday 8:00 AM to 4:15 PM



How to use your proximity card?

When using your proximity ID card for building access, place your proximity card approximately two inches away from the electronic card reader located beside the door and hold it there for about 2 seconds. The door should unlock if you are authorized to access this area.

How to report proximity card problems?

If your proximity card does not work or stops working for any reason, you should contact the QB3 administration to verify that they have arranged for activation of your card. The electronic proximity access control feature of the ID card is NOT automatically activated.

Keys

Please allow one week for your door keys to be generated by the UCSF lock shop. You may request a key by **contacting Paolo Daniele**. When keys are available, you will be notified by reply email. Keys must be signed out by the person to whom they are issued at the Facilities Management office in Genentech Hall room GH-112. You must present your proximity ID card to receive your key. Each key has a serial number that identifies it as your key. Please return your key to QB3 Administration when you leave your position and do not pass it on to another person. If you lose your key or proximity card, please notify QB3 Administration.

Lab Space

EH&S

It is the tenant's responsibility to ensure that all activities in the QB3 Incubator comply with all applicable NIH guidelines and with all applicable federal, state and local regulations, as well as all applicable university policies and procedures, including but not limited to UCSF Environmental Health and Safety policies and procedures.

The UCSF office of research has assembled a helpful guide for new faculty members to prepare to meet these standards even before they arrive (<http://www.research.ucsf.edu/QG/orQgToc.asp>) – these suggestions should help you navigate this important, but complicated terrain. Some of this information is repeated here:

What should I do before I get to UCSF?

Given the complex nature of the university environment, you should establish your research program before you arrive at UCSF. Investigators require regulatory approvals. The sooner you obtain these required elements, the sooner you can begin your research.

You can expedite your move into your office and research spaces by working with these UCSF departments before starting your program:

- Office of Environmental Health and Safety (OEHS): Provides consultation on laboratory design and guidance on safety requirements for specialized research equipment.
- Departmental Safety Advisor (DSA): OEHS assigns DSAs to each Department/Unit to serve as a single point of contact for all of their health and safety needs. Contact your DSA, **Art Lamsen at 476-2160**, as soon as possible to determine if there will be any special requirements or restrictions for the use of your research space or your research materials.

Specific DSA services include:

- Advice on transfers of laboratory equipment, supplies, and research materials (biological, chemical, radioactivity, controlled substances) to UCSF.
- Serve as your primary contact for all safety issues.
- Audit of your initial laboratory setup for safety compliance. You will need this clearance before the regulatory committees can give final approval for your research.
- Determination of what type of compliance-related training is required before research is allowed to begin.

Research Regulatory Approvals and Requirements:

Most of the regulatory committees will not approve your application until your laboratory research space has been cleared for use by the OEHS. However, you can start the application process without this clearance by working with the following:

- **Technical Committees:** Technical Committees oversee the use of biologicals, chemicals, controlled substances, and all use of radioactive materials. If you have any questions, please contact your Departmental Safety Advisor (DSA), the Office of Environmental Health and Safety at 476-1300, or the Technical Committees Coordinator. Your DSA should be contacted first.

If you have specific technological questions about biological or radiological hazards or controlled substances, please contact the following hazard specialists:

- Biosafety Officer: 476-2097
 - Radiation Safety Officer: 476-5303
 - Controlled Substances Program: 502-8653
- **Committee for Human Research (CHR):** If you will be transferring human subjects research protocols to UCSF, you must contact the CHR *before* initiating this research at UCSF for mandatory review and approval. If you will be starting a new project, you must have CHR approval **before** initiating human subjects research at UCSF. The

CHR provides extensive guidance on all human subjects research issues.

- **Laboratory Animal Use:** It is **not possible** to accommodate use of live vertebrates in research conducted by QB3 Garage Tenants at UCSF.

“Recharging” of Expenses

Some services provided by UCSF departments are billed by a process called “recharging.” Recharging for services is an accounting action whereby funds from the user’s University account are transferred to the University department providing service. University accounts are not available to Garage. QB3 will request service on behalf of Tenant and will bill monthly. Reimbursements shall be by check made out to “UC Regents” delivered to Paolo Daniele in BH210.

Examples of services covered by recharge reimbursement: Telephone line/DSL activation; earthquake bracing of equipment; all facilities modifications, EH&S.

Move-in Preparations

The Genentech Hall loading dock on Owens Street is the entry point for all heavy equipment and moving vans. A freight elevator is available for use near that loading dock. Please consult with Paolo Daniele (paolo.daniele@ucsf.edu) at least 2 days prior to your scheduled move so that he may facilitate the process.

Modification to Space

Written prior approval by QB3 administration is required for all modifications of the facilities. Any request by tenant for improvements or installations in the premises shall be submitted in writing to Douglas Crawford (douglas.crawford@ucsf.edu) together with plans and specifications for review and approval. QB3 Administration, in its sole discretion, may withhold its approval. If any such request is approved, QB3 shall provide the project management of the improvements or installation at tenant’s sole cost and expense. Tenant shall pay the full cost of the fee charged by UCSF Facilities Management and/or its contractor, for coordinating and managing the improvements.

Phone Service

Phone line activation is obtained by recharge only from the University’s Information Technology Services (ITS) department and must be arranged by the QB3 administration. You may purchase your own equipment or buy it from ITS. Basic telephone line activation via an existing phone jack costs approximately \$100 and takes as long as 2 weeks. Installation of a new line and jack will require permission of landlord and significant labor charges. Equipment costs vary, but typically run \$200-\$250 or more, depending on your choice of phone. DSL phone lines are available for

internet access (see next section). Please see Paolo Daniele in BH210 for assistance with a service request for phone line activation.

Cell phone reception varies greatly with the carrier. Some companies have clearly better service to this area while others have quite poor service. Ask other occupants about their experience.

Internet Access

Wireless internet access is available in the Garage.

Mail Service

Incoming USPS mail can be collected at UCSF Mission Bay Byers Hall Suite 214. Please use the following address:

Company Name
UNIVERSITY OF CALIFORNIA, SAN FRANCISCO
QB3 MC: 2522
1700 4th Street Byers Hall Ste 214
San Francisco, CA 94158-2330

Outgoing US mail may be posted in the USPS mailbox near the shuttle stop on 4th Street.

The Mail Code (2522) is applicable only to USPS, not to other commercial carriers. Please include it though if you're uncertain of the delivery method. Be sure to give carriers your own room number & letter where you would like your product orders to be delivered.

Building Utilities & Malfunctions

In the event of any problem with the fumehood, water supply, drains, lights, heat, restrooms, ventilation, air conditioning, odors, elevators, locks/card readers, doors, house vacuum, natural gas or any other building utility, please contact Facilities Management (FM) at 6-2021. The FM Customer Service Center provides access to facilities services 24 hours a day, 365 days a year. View the Customer Service Center pages for assistance in your office and lab spaces at <http://www.fm.ucsf.edu/fm/csc.html>. If the problem is not addressed to your satisfaction, contact Paolo Daniele, paolo.daniele@ucsf.edu.

Intellectual Property

Tenants of the QB3 Garage shall own the intellectual property they solely create within the confines of the Garage and that results from their fee-for-service use of the Core Facilities. UCSF investigators working in the Garage must nonetheless fulfill their overarching obligations to UC by disclosing any inventions they make in the Garage to UCSF's Office of Technology Management (OTM; www.otm.ucsf.edu).

The ownership of intellectual property created in all other contexts will be subject to UC Patent Policy. In particular, the conception and/or reduction to practice of Intellectual property made in the course of using UCSF facilities other than the Garage and Cores must be disclosed promptly UCSF's Office of Technology Management (OTM; www.otm.ucsf.edu) so that the OTM can determine what rights and equities, if any, UC may have in the subject intellectual property. If the OTM determines UC has rights and equities therein and deems the subject matter to be patentable or protectable by an analogous property right that the OTM wishes to pursue, the inventors must execute any documents and do all things necessary, at UC's expense, to assign to UC all rights, title, and interest in the intellectual property and to assist UC in securing patent or analogous protection thereon. The inventors will receive a share of any resulting license income as per the UC Patent Policy.

Garage tenants who want to collaborate with UCSF employees are encouraged to do so but must first negotiate and sign a collaboration agreement with UC to this effect (see "Working with UC Investigators", below). Similarly, any exchange of proprietary research materials between Garage tenants and UC investigators will require a Material Transfer Agreement signed by UC.

Garage tenants who are also UC employees must separate company research from their university research. For example, they should: a) not allow company representatives to participate in their university research group meetings unless a collaboration agreement with UC is in effect, and b) always maintain separate laboratory notebooks for their university and company research.

Garage tenants who are working with UC intellectual property must have a signed license or option agreement in place with UC.

Pre-move-in Check List

- ___ Submit executive summary of company, description of proposed work, letter of support from UC collaborator, and contact information to Douglas Crawford for QB3 Executive Committee approval.
- ___ Agree lease terms with Douglas Crawford and Robert Berryman.
- ___ Submit proof of corporate coverage.
- ___ Research EH&S requirements (<http://www.ehs.ucsf.edu/>)
- ___ Sign lease and submit rent and security deposit.
- ___ Sign “Agreement to Reimburse.”
- ___ Coordinate and schedule equipment move-in and installation with Paolo Daniele.
- ___ Supervise all equipment and furniture moves executed by a third-party moving company.
- ___ Complete ID Card application.
- ___ Complete Emergency Contact Form.
- ___ Submit a request for room keys.
- ___ Complete EH&S approval.

Move-out Check List

- ___ Provide at least a 30-day written notice to end tenancy to Douglas Crawford.
- ___ Restore all leased space to original conditions. If repairs are needed, coordinate any work with Paolo Daniele.
- ___ Remove/dispose of all equipment, furniture and any surplus material from the premises.
- ___ Thoroughly clean all benches with 10% Sodium Hypochloride (bleach).
- ___ Coordinate a post-cleaning inspection with the Environment Health & Safety Office.
- ___ Supervise all equipment and furniture moves executed by a third-party moving company.
- ___ Coordinate and schedule a post-move walkthrough of the leased space with Paolo Daniele.
- ___ Notify QB3, the USPS and other contacts about your change of address.
- ___ Return all keys and ID Cards.

Contacts

Monthly Rents and Reimbursement

Payable to “Regents of UC”, due 1st week of every month to Paolo Daniele, QB3 BH 210.

24 HOUR EMERGENCY NUMBERS

UCSF Campus

Fire, Police, Medical Emergencies,	Campus phones: 9+911
Haz Mat Spills	Non-campus or pay phones: 911
UC Police Department Non-Emergency	476-1414
Building Damage, Utilities	476-2021
Poison Control (Statewide)	1-800-876-4766
Campus Emergency Information HOTLINE	502-4000 (or 1-800-873-8232 if local phone service is interrupted)
Needlestick Hotline 24-Hr Pager	719-3898
Genentech Hall Security Desk	514-4020

Cell Phone Emergency Calls (in San Francisco only)

For 911	553-8090
Non-Emergencies	553-0123

Security Escort Service

The UCSF Police Department Security Services Division provides security escorts to members of the Campus Community at Mission Bay. The service is available 24 hours a day and 7 days a week. Escorts are provided on and immediately adjacent to University property. To request a security escort simply call 514-4020 or visit the Genentech Hall Security Desk. The Security Officer at the station will arrange for the escort.

Working with UC investigators

We strongly encourage collaborative research relationships with UC investigators; indeed, proximity to QB3 investigators of the incubator's principal advantages. However, these relationships require a collaborative or sponsored research agreement signed by UC. Such agreements are negotiated with the industry contracts office of the UC campus where the UC collaborator is located. For collaborations with UCSF investigators, contact the Industry Contracts Division of the Office of Sponsored Research (<http://industry.ucsf.edu/icd/home.html>).

Additional Resources and Services Available

Byers Hall

Local events notices, information on research and education resources, links to Core Facilities, conference room reservations, contacts and other resources can be found at: <http://byershall.ucsf.edu>

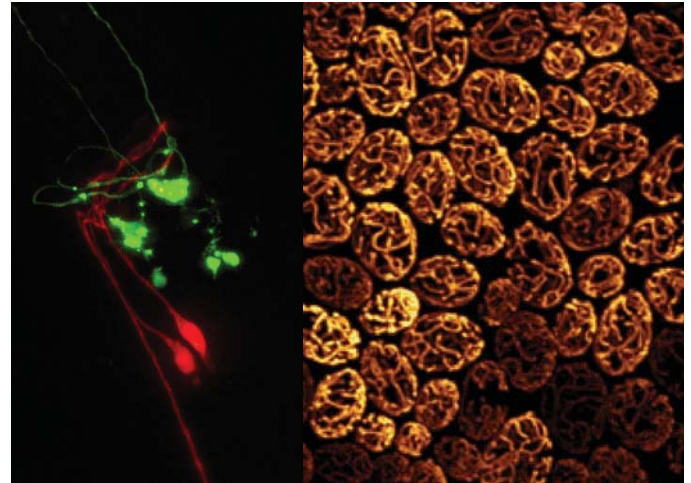
Local Core Facilities

Shared Computing Facility
Biomedical Micro and Nano technology Core
Small Molecule Discovery Center
Nikon Imaging Center
Center for Advanced Technology
Resource for Biocomputing, Visualization, and Informatics
Membrane Protein Expression Center
Surbeck Lab Core Facilities
Nuclear Magnetic Resonance Lab
Micro and Extreme CT Imaging Core

Other UCSF Core Facilities

A comprehensive list of research cores at UCSF can be found at the following website: <http://http://ctsi.ucsf.edu/cores/corelist.php>

UCSF Nikon Imaging Center



Stimulating innovation in biological research by providing investigators access to cutting edge light microscopy resources.

The UCSF Nikon Imaging Center provides access to state-of-the-art optical microscopes.

Instrumentation

- Spinning disk confocal microscope: Has environmental control for live cell imaging. Filters and lasers for GFP and mCherry. Ideal for high resolution 3D imaging of live cells
- Swept-field confocal microscope: Video rate line-scanning confocal system for fast 3D imaging of cells and tissues
- Total internal reflection (TIRF) microscope: Ideal for imaging cell membranes, single molecules, and other structures immediately adjacent to the coverslip. Has lasers and filters for CFP, YFP, GFP, and mCherry
- Time lapse microscope: Epifluorescence microscope with motorized stage, environmental chamber, and hardware autofocus for long-term time lapse imaging of mammalian cells. Has filters for DAPI, FITC, Rhodamine, Cy3, Cy5, CFP, YFP, GFP, mCherry
- Motorized epifluorescence (6D) microscope: XY-stage for image stitching and multiwell plate imaging, fluorescence and color cameras, filters for DAPI, FITC, Rhodamine, Cy3, Cy5, Fura-2, CFP, YFP, GFP, mCherry

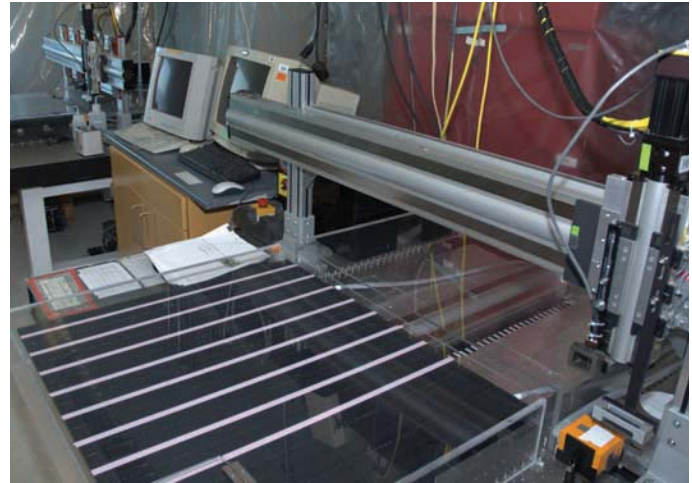
- Spectral confocal microscope: Laser-scanning confocal system with conventional 3-color detection system for DAPI, FITC, and Rhodamine as well as a spectral imaging system for recording emission spectra from each point in a scan
- Offline analysis computers equipped with NIS-Elements, Metamorph, ImageJ, and MATLAB

Outside access

Outside access to the NIC is available after execution of a standard agreement with UCSF. Users must first be trained on the microscopes they wish to use, after which use of the microscopes is available for an hourly fee.

Contact information:

Kurt Thorn
 Rm. S252 Genentech Hall
 MC2140
 600 16th St.
 San Francisco, CA 94158
 Email: kurt.thorn@ucsf.edu
 Phone: (415) 514-9709
<http://nic.ucsf.edu/>



Specializing in genomics and proteomics

The Center for Advanced Technology is a unique research core facility featuring leading-edge technologies and high capital equipment, all located at the heart of the UCSF Mission Bay campus in Genentech Hall.

Capabilities and typical workflow

Unlike traditional core facilities, which mainly exist as strictly as fee-for-service operations, the CAT is based on an Open Access model, whereby community members actually execute experiments and projects in the CAT themselves. The CAT features a wide variety of equipment and technologies including:

- High through liquid handling
- Flow cytometry
- Ultra-deep sequencing
- Array fabrication
- Microarray hybridization & analysis
- Spectrophotometric analysis

Furthermore, the CAT provides space, tools, and even a latest-generation 3D rapid prototyping machine for the production of new instruments and new technology.

The CAT also houses the Nikon Imaging Center, which provides the latest in high resolution microscopy.

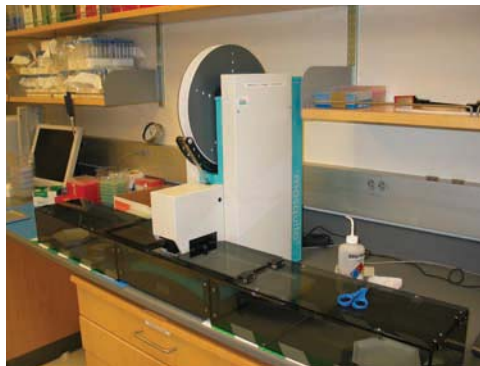
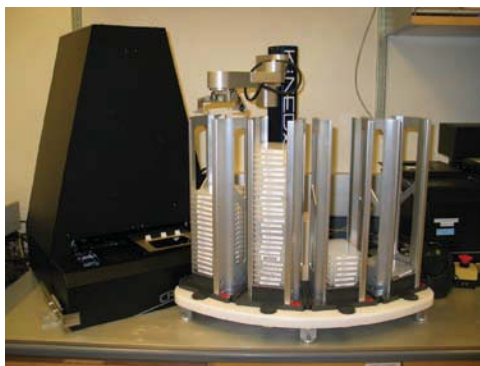
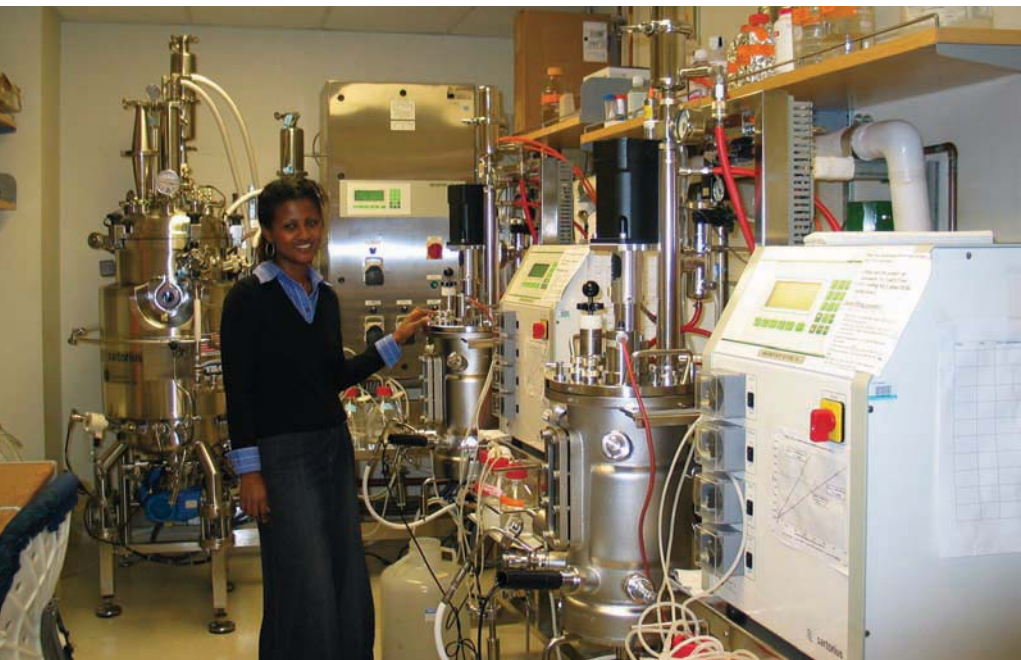
Access

The combination of easy, walk-in access and the availability of advanced instrumentation make CAT a natural nexus for collaboration. Training classes for individual components of the CAT are given on demand by the CAT Director.

Contact information:

Joe DeRisi
 Tel: (415) 476-4132
 Fax: (415) 476-4581
 Email: joe@derisilab.ucsf.edu
<http://cat.ucsf.edu/index.html>

Membrane Protein Expression Center



Accelerating the production, structure determination, and elucidation of function of integral membrane proteins

Our two NIH-sponsored centers (the Membrane Protein Expression Center and the Center for Structures of Membrane Proteins) focus on the design, expression, purification, crystallization, and structure determination of integral membrane proteins.

These two centers are funded by two five year grants by the NIH Roadmap for Structural Biology and the NIH Protein Structure Initiative. Our goal is to determine the atomic resolution structure of hundreds of medically relevant integral membrane proteins. We express our proteins in bacteria, archea, yeast, and other eukaryotic cells including human cells. We specialize in membrane channel proteins, receptors, and transporters.

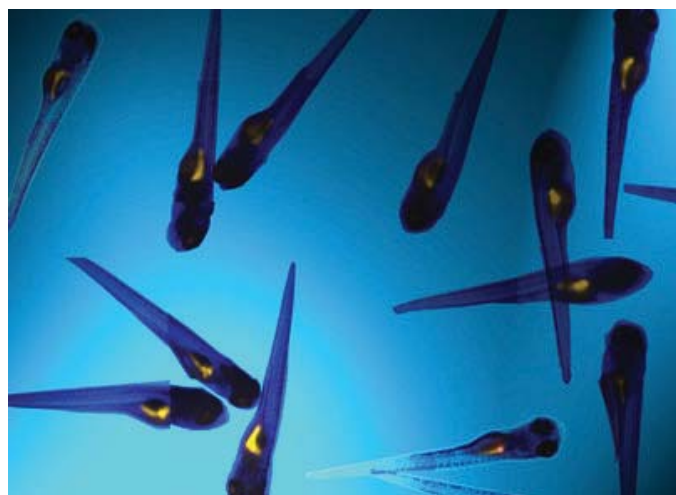
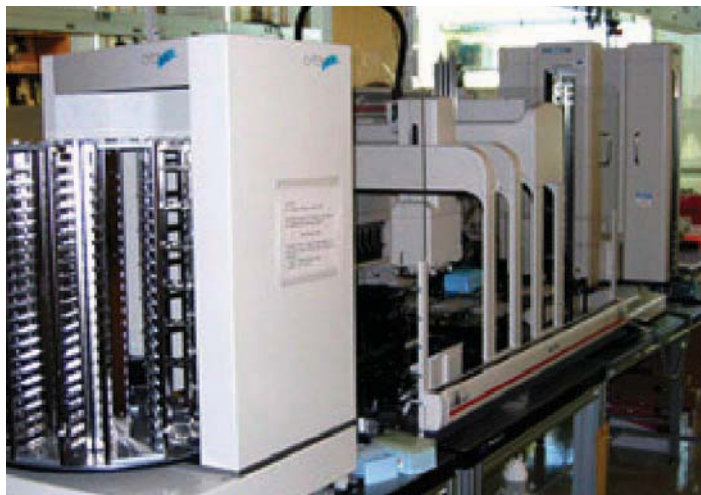
- Membrane protein gene codon optimization
- Optimization of membrane protein expression
- Membrane protein expression from >1 mL to 75 liters
- State of the art membrane protein purification and characterization
- Extensive crystallization screening at nanoliter volumes

- X-ray diffraction data collection at our two home sources and the Advanced Light Source
- State of the art structure determination facilities and equipment
- 128 node computer array for computational molecular dynamic simulations

Contact

William Harries
 Room S-138 Genentech Hall
 600 16th Street
 San Francisco, CA 94158-2517
 Email: harries@msg.ucsf.edu

<http://mpec.ucsf.edu/index.htm>



Overview and Mission

The mission of the Small Molecule Discovery Center is to provide UC investigators with small molecule discovery capabilities, emphasizing the screening and chemical optimization of drug-like molecules for biological targets of therapeutic relevance. The SMDC has a well-established group for high-throughput screening (HTS) and high-content screening (HCS), and has recently incorporated genome-wide siRNA screening and fragment-based discovery. The SMDC is also distinguished from many academic screening centers by the presence of a chemistry group staffed by medicinal/synthetic chemists, many with direct pharmaceutical industry experience. This group collaborates with investigators to evaluate HTS results and to pursue chemical optimization programs for projects judged to be of significant therapeutic interest. Through collaboration with UC investigators and by applying our expertise in screening and medicinal chemistry, we aim to jump start the drug discovery process for a new generation of therapeutic targets.

Capabilities and Typical Workflow

The HTS division of the SMDC performs biochemical and cell-based assays, utilizing a screening library of more than 180,000 compounds. This compound collection contains diversity libraries, targeted libraries, and a 3200-fragment library optimized for fragment-based screening. Collaboration between the SMDC and an investigator lab begins with development of an assay suitable for a high-throughput format. This work is normally performed by the investigator's lab in consultation with the HTS division. When the assay is judged to be robust enough for screening (e.g., with a Z prime > 0.5), it is transferred to the SMDC where the actual screen is performed. For a typical UCSF project, graduate students or postdocs from the investigator's

laboratory are involved in performing the HTS. For grant-funded collaborations, the SMDC can supply additional personnel to develop and run the HTS assay. Major equipment available in the SMDC for HTS includes:

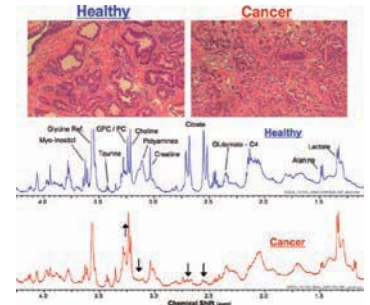
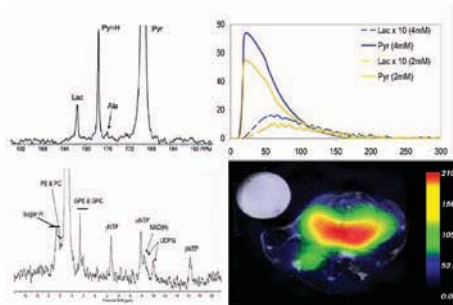
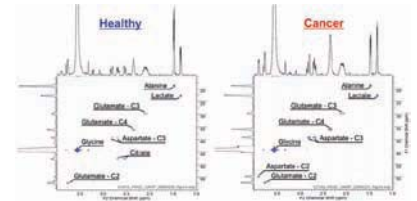
- Molecular Devices Analyst HT and Analyst AD multi-modal plate readers
- GE Healthcare InCell Analyzer 1000 high-content imager
- Fujifilm AP3000 for high-throughput surface plasmon resonance spectrometry for fragment screening
- Beckman Coulter Biomek FXP, with 96-well and 384-well liquid handling, Cytomat 5 plate hotel and Cytomat 2C incubated hotel
- Two Matrix Wellmate liquid handlers for bulk dispensing
- Matrix Platemate for liquid handling and plate washing
- Velocity 11 plate sealer
- Tissue culture incubators and biosafety cabinets

Contacts

Chemistry Contact: Adam Renslo
 Tel: (415) 514-9698
 Fax: (415) 514-4507
 Email: adam.renslo@ucsf.edu

Screening/Biology Contact: Michelle Arkin
 Tel: (415) 514-4313
 Fax: (415) 514-4507
 Email: michelle.arkin@ucsf.edu
<http://smdc.ucsf.edu/>

High Field NMR Biomarker Discovery Facilities



This core facility provides the resources and technical expertise required to identify, validate and implement robust, quantitative, noninvasive magnetic resonance (MR)-based metabolomic biomarkers of human disease and therapeutic response. Accomplishing this goal requires the very specialized NMR techniques requiring expert knowledge and cutting edge equipment contained within this core NMR facility. Research performed in the lab focuses on studies of ex vivo tissues, biofluids, and preclinical cell and tissue culture bioreactor and in vivo murine models of human disease using state of the art multinuclear ^1H , ^{13}C , hyperpolarized ^{13}C , ^{15}N , ^31P and ^{19}F MR spectroscopy (MRS), high-resolution magic angle spinning (HR-MAS) spectroscopy (HR-MAS) and MR imaging (MRI) techniques.

Instrumentation

The Biomedical NMR Lab, within the UCSF NMR Lab, houses:

- High field multi-nuclear 500 MHz HR-MAS NMR spectrometer integrated with a HyperSense™ (Oxford Instruments) DNP hyperpolarizer
- 600 MHz micr o-imaging, HR-MAS spectrometer integrated with a HyperSense™ (Oxford Instruments) DNP hyperpolarizer
- A large number of high-field spectrometers (400 MHz, 2500 MHz, 2 600 MHz and a 800 MHz) with multi-nuclear capabilities and sensitive cryo-probes

Contact Information

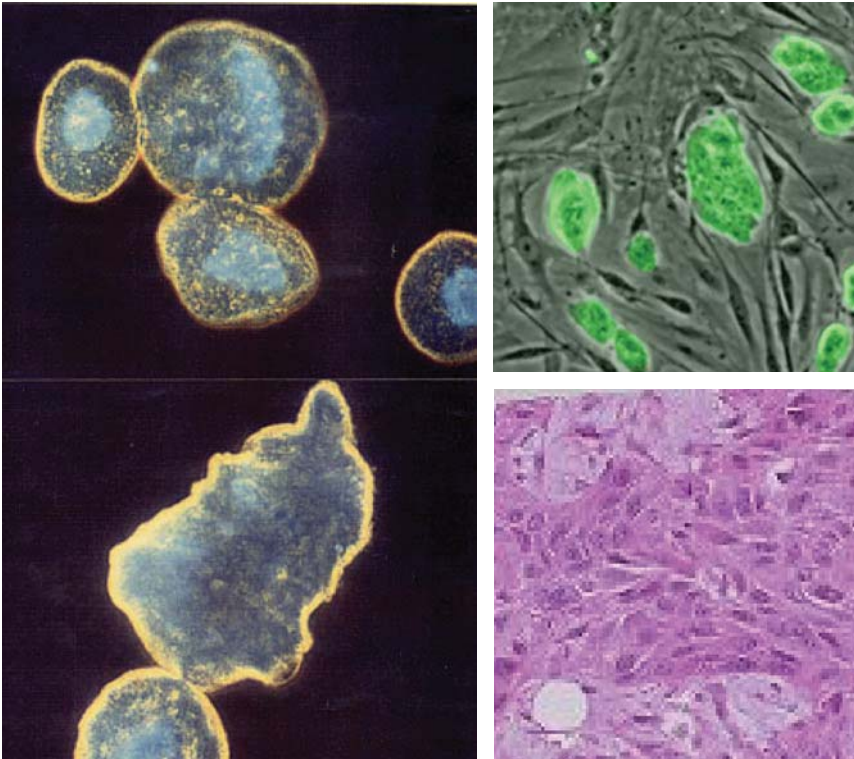
Hillie Cousart Ph.D, Assistant Director of the Surbeck Laboratory

Email: hillie.cousart@radiology.ucsf.edu

Phone: (415) 514-9242

<http://picasso.ucsf.edu/>

Determining the structure of biologically important molecules, improving the capability for determining high-resolution structures, improving methodology and applying it to larger molecules



The Cell Culture Facility — cell lines, media, tissue culture service, cell banking, custom formulations — more than 35 years of experience

The Cell Culture Facility provides cell and molecular biology products for resale. Prices are discounted and there are no shipping, handling or dry ice charges. Resale products may be stocked or available for next day or second day pickup; CCF can deliver to your lab. The CCF also maintains portals for ordering discounted custom oligo, cDNA, shRNA, etc. The CCF prepares and sells quality standard and custom media for tissue culture. The CCF has a tissue culture service and cell banking service with our trained technicians to help you. Cell lines are available at a significant discount; pick up a frozen vial or growing flask.

- Cell banking — liquid nitrogen storage and database tracking to protect your valuable stocks
- Tissue culture service — cell lines available for pickup, search our website or inquire, provided as frozen vial or growing flask
- Advanced tissue culture service — scale up, troubleshooting, protocol development, testing, etc.
- Standard Media — available for pickup at either stockroom location, QC tested, always fresh. Formulations available on website
- Custom Media — we can make anything you need with only a 2 liter minimum. Turnaround usually one week
- Resale products available from more than 50 vendors — many stocked, remainder available next day or second day. CCF negotiates volume discounts and passes savings along to you. Ordering extremely easy — phone, FAX, email,

web ordering, walk up to window. No S&H or dry ice charges. Delivery to your lab. We manage the accounting so you can concentrate on your research

- Portals for custom products from our vendors — oligos from IDT, Invitrogen, Bioneer, Genosys, Operon. Sequencing from SeqWright. cDNA, EST, shRNA lentiviral sets, etc. from Open Biosystems. Full length gene synthesis from Blue Heron. All discounted with delivery to your lab
- Portal for UCSF Immunology Hybridoma core, search antibodies and order through the CCF

Guidelines for access

Researchers outside UCSF can use the CCF. The University requires CCF to add an additional 26% markup, so CCF does not recommend that outside groups purchase resale items. CCF media, cell lines and tissue culture services are used worldwide. CCF will ship with your FedEx number. Visit www.ccf.ucsf.edu to open an account, click on "Forms", and select 'non-UCSF researcher'. Please print and fill out this form, fax to (415) 476-6386. Payment by P.O. (standing or each order), check or credit card.

Contact Information

Linda Reilly, Director
Email: lreilly@ccf.ucsf.edu
Phone: (415) 476-5247

<http://www.ccf.ucsf.edu/>

UCSF Mission Bay FAMRI Library



The Mission Bay Library is a branch of the UCSF Library and Center for Knowledge Management. UCSF students, staff and faculty visit the Mission Bay Library to obtain hard to find articles and books or to study in our quiet environments. Books can be delivered here from the larger Parnassus Library and can be returned here no matter where they were checked out. The library is also open to the general public. Four public computers are available for this purpose.

Interactive Learning Center – Mission Bay (ILC-MB)

The ILC-MB consists of 16 Apple G5 iMacs, an instructor station, and an overhead projector and screen. The facilities are available to UCSF students, faculty, and staff during open library hours. The facilities may be reserved by UCSF departments and faculty. The computers are packed with applications including general productivity software titles in addition to a full suite of clients for network access and more specialized software for bibliographic management, database access, and statistical analysis.

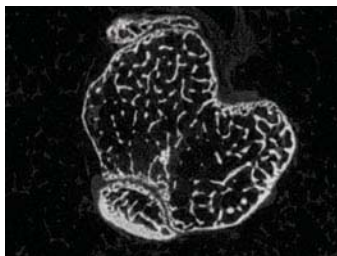
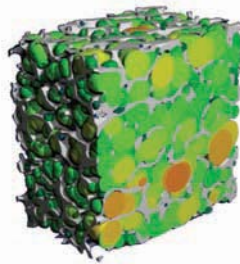
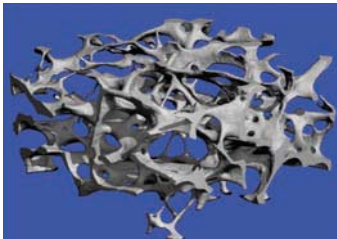
Reference assistance

Reference services are available anytime during open library hours. Library staff can be contacted Monday to Friday, 10 am – 11:30 am and 1:30 pm – 3 pm via the Info Desk at (415) 476-2337 or e-mail at franklin@library.ucsf.edu.

William J. Rutter Center
1675 Owens St., Rm. 150
San Francisco, CA 94143-2119
Phone: (415) 514-4060

<http://www.library.ucsf.edu/missionbay>

Micro-Tomography Core Facility



Applications

- Bone imaging (cortical, cancellous structure and density assessment)
- Full skeletal phenotyping (mice)
- Calcified tissues (enamel, dentin, plaque)
- Vascular imaging (with contrast)
- Soft tissue imaging (with contrast)
- Non-biological microstructures (fossils, foams, fabrics, etc)
- Micro-finite element mechanical loading simulations (QB3 Cluster)

Desktop micro-tomography

- Scanco μ CT 40
- Nominal isotropic resolution: 6 μ m; 9 μ m (10% MTF)
- Dimensions Up to 36mm x 80mm size
- Acquisition in air or liquid possible
- Image data may be exported to any standard format

Human in vivo micro-tomography

- Scanco XtremeCT
- Human distal radius and tibia
- Nominal isotropic resolution: 41 μ m; 100 μ m (10% MTF)
- Dimensions up to 126mm x 150mm for ex vivo applications

Contact information

Andrew Burghardt
Email: andrew.burghardt@radiology.ucsf.edu
Phone: (415) 514-9658

[http://qb3.ucsf.edu/cores/images/Micro and Xtreme
_CT_Imaging_Core.pdf](http://qb3.ucsf.edu/cores/images/Micro%20and%20Xtreme%20CT%20Imaging%20Core.pdf)

Micro and Nanofabrication Core (MNFC)

The UCSF Micro and Nanofabrication Core (MNFC) provides facilities for the design and fabrication of micro/nano biosystems for cellular integration and tissue engineering, biomimetic architectures for functional biomaterials, and therapeutic drug targeting and delivery.

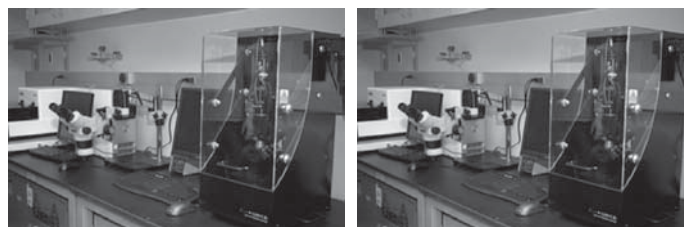
Services/Capabilities

- AutoCAD
- Spin coater
- Karl Suss mask aligner
- Profilometer
- Atomic force microscope

Guidelines for use

Users of the UCSF MNFC must:

- Obtain authorization to work in the core facility from the director
- Pass general laboratory and hazardous waste management training sessions provided by the Office of Environmental Health and Safety
- Pass a microfabrication laboratory cleanroom policy, safety, and gowning exam
- Receive certification for each piece of equipment they plan to use



- Sign into the equipment calendar before they use a piece of equipment
- Acknowledge the UCSF MNFC in any publication that is supported by research carried out with MNFC facilities

Contact information

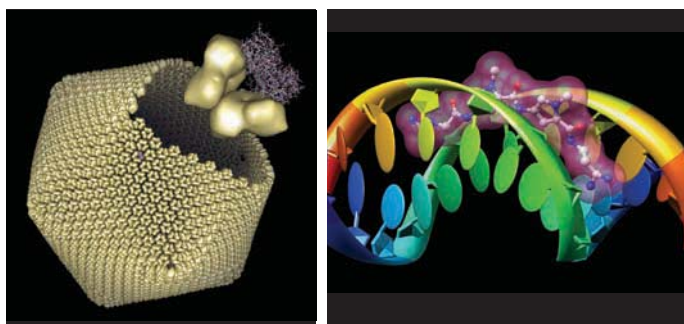
Mark Steedman
 Phone: (415) 514-9695
 Email: mark.steedman@ucsf.edu
<http://qb3.ucsf.edu/nanotech/>

Resource for Biocomputing, Visualization, and Informatics (RBVI)

The Resource for Biocomputing, Visualization, and Informatics (RBVI) is an NIH-funded Biomedical Technology Resource Center. We develop software and advanced web-based resources for the integrated visualization and analysis of molecular structure at scales ranging from atomic to supramolecular. We develop methods for handling the diverse types of data associated with these structures and their broader contexts, and we apply these tools to study structure-function relationships to reveal the molecular mechanisms of biological processes. Our primary efforts are in visualization and analysis of protein structure at multiple scales, protein interactions and similarity networks, and in defining principles by which enzyme structure mediates catalytic function. Our goals are to advance our understanding of the molecular basis of disease and phenotypic variation, annotate proteins of unknown function, identify targets for drug development, more effectively design drugs, and engineer proteins with new functions.

Services and capabilities

- Access to state-of-the-art 3D visualization hardware and software
- Expertise in modeling and analysis of complex molecular structure
- Expertise in sequence analysis software and databases
- Expertise in protein network clustering and modeling



Guidelines for access

Most access, especially to visualization hardware such as our large-screen stereoscopic projector, is through on-site use. Some software and databases can be accessed remotely.

Contact information

Scooter Morris, Executive Director
 Phone: (415) 514-4406
 Fax: (415) 502-1755
 Email: scooter@cgl.ucsf.edu
<http://www.rbvi.ucsf.edu/>